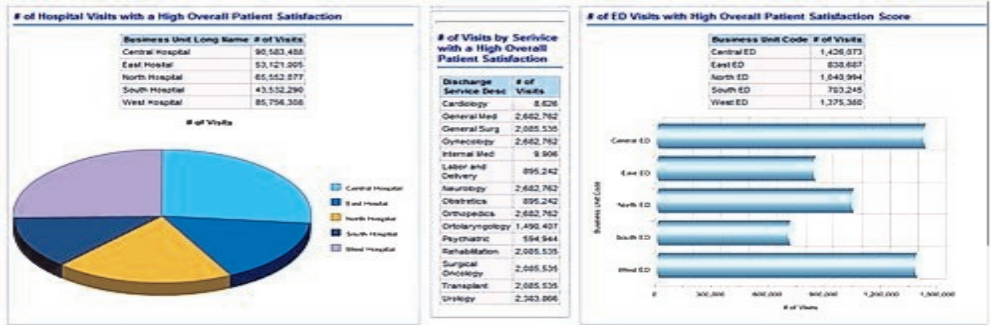


Do you know the critical areas you need to monitor to evaluate your Healthcare organization's overall performance? Are you tracking that information?



Here are some of the over 100 Healthcare specific metrics that you may choose to deploy:

- ◆ Average Age of Plant
- ◆ Hospital Charge Index
- ◆ Net Income to Patient Revenue
- ◆ Net Patient Revenue per FTE
- ◆ Revenue per Physician FTE
- ◆ Overall Charge Index
- ◆ Change in Medicare Case Mix Index
- ◆ Inpatient Surgery Percentage
- ◆ Hospital Cost Index
- ◆ Nongovernment Payers Percentage
- ◆ Medicare Length of Stay
- ◆ Break-even Revenue Factor
- ◆ Revenue Growth
- ◆ Debt-to-Asset Ratio
- ◆ Times Interest Earned Ratio
- ◆ Market Share Percentage
- ◆ Overhead Cost
- ◆ Profit per Physician

*If there is a Healthcare metric you need that we don't deliver, we'll help you create it!*

Discover how you can deliver true value to your Healthcare decision makers: Dashboard Gear Healthcare Management Warehouse!

### DECISION SUPPORT:

In our current economic climate, Healthcare organizations are under increased pressure to do more with less. For most Healthcare organizations to thrive, they need to know precisely where their money is being spent and how best to balance cost-cutting or cost-shifting initiatives while maintaining a high quality of patient care. Very likely the information needed to help manage the organization is currently locked up in existing financial, human resources and other IT systems. Unfortunately, the current technology is unable to easily deliver the relevant data upon which decisions are made.



Dashboard Gear has the key! Our Healthcare Management Warehouse is a set of healthcare specific metrics that perform in concert with your Dashboard Gear Financial and Human Resources Toolkits. The Healthcare specific metrics that you choose to deploy will unlock the specific information necessary to spot trends, forecast future performance, estimate organizational goal progress and address situations before they impact the bottom line.

### INTEGRATION:

As part of the installation of the Dashboard Gear solutions, our service team will integrate the Dashboard Gear solutions to your Lawson Enterprise data and optionally to supporting systems such as Kronos, Epic, Cerner, and others.

### TOOL INDEPENDENCE:

As with our Reporting Toolkits, your Dashboard Gear Healthcare metrics can be accessed by all the current reporting tools like LBI Crystal Reports, Cognos, Business Objects, Microsoft Reporting Services and more.